



# CONSIGNMENT AUCTION

## THURSDAY • AUGUST 28, 2025

### 9:00 AM CST

Sale Location: Cornlea, NE – Junction Hwy 81 & 91 – 5 miles west on 91, South to Cornlea

**BID LIVE ONLINE - [www.equipmentfacts.com](http://www.equipmentfacts.com) • NOT ALL ITEMS selling online**

**All equipment will be mixed, be on time. NOTE: MUST BE REMOVED WITHIN 30 DAYS**

#### COMBINES & CHOPPERS

'15 JD S670, duals, CM, chopper, 3820/2838 hrs  
INT 1420, mint condition - Estate  
'02 CIH 2366, CM, chopper, 4000/3000 hrs.  
'20 CIH 8250, 1150/780 hrs, duals, CM, chopper, auto steer \$11,000 invoices, field ready  
CIH 2388, cm, chopper, 30.5x32 rubber, 5000/3900 hrs., clean machine  
CIH 1680  
CIH 7120, duals, cm, chopper, bin ext, 520/85R-42 duals, 3538/2517 hrs  
JD 9500  
JD 9600  
CIH 1660, 200 hrs on overhaul engine, PARTS  
JD 7720 Titan II  
JD 6620  
CIH 2188  
JD 9610, chopper, chauf spreader, 4250/2841 hrs., 30.5x32 rubber, nice clean machine  
Field Queen 7650 w/dump box  
Field Queen 7600 w/3R30  
Field Queen 7600 w/4R30  
Field Queen 2R36 head  
(2) Field Queen 7' hay head  
Field Queen 4R30 cornhead  
NH 1915 w/8R20, 2352 hrs., 4x4, kernal processor - LIKE NEW

#### TRACTORS

IHC 986, cab, water in oil  
IHC 1086, cab  
JD 4840 PS, needs brakes  
'20 CIH Farmall 130A MFD, PQ, 460x34 rubber, 3 hyd., 3807 hrs.  
'20 CIH Farmall 130A MFD, PQ, 460x34 rubber, 3 hyd., 4400 hrs.  
White 2-85 MFD, cab  
Ford 8N  
Ford Bi-directional 276 w/Loader, bucket & grapple  
Farmall M  
'17 JD 6105E, MFD w/JD 260H loader, 1345 hrs., Power Reserve, 3-hyd., 460/85R38 rubber  
Challenger MT765E, 5015 hrs, \$52,000 trans work 24" belts  
'13 JD 8335R, 8080 hrs, \$40k in trans and ILS work, IVT, 480x50 rubber  
12 JD 8360R, IVT, ILS, 8694 hrs., front & rear duals, 480/70R.34 - 35% rubber, rear 480/80R.50 - 35% rubber, frnt & rear wts, 5 hyd.  
JD 4640 QR w/Allied 895 loader  
CIH 8110, 2wheel, duals, wts, 6203 hrs., 480/42 rubber  
White 6175, 2wd, duals, 4650 hrs., \$6000 trans work  
Farmall Super H  
JD 60, wf

JD 3020 PS, gas, nf, canopy, s#103955R, RARE  
Farmall Super M  
'13 JD 7230R, MFD, IVT, duals, wts, left hand reverse, 5330 hrs., 480/80R.46, frnt & rear wts  
IHC 856  
IHC/Farmall 450 w/Du-AI 325 loader  
JD 8430, 4x4, duals,  
JD 4755 QR, duals, 2wd, 18.4x42 rubber  
CIH 125MAXXUM w/CIH 755 loader, bucket, 3113 hrs.  
INT 504, gas  
Case 930 diesel w/Du-AI 300 loader  
IHC 806 Wheatland, diesel, needs injection pump work  
INT 656LP, nf  
David Brown 995, diesel w/loader

#### LOADERS & CONSTRUCTION

JBC 930 forklift, 4x4, 3700 hrs. - LIKE NEW  
Ingersol Rand 185-426 industrial ac  
Farmall FII loader w/8' bucket & grapple  
Buhler Allied 895 w/Joystick valve, 8' bucket - off a 7810  
West Point 12' box scraper  
Toyota 5000lb fork lift  
JD 480 fork lift, trans slow  
Koyker 5 loader w/JD mts  
Westendorf TA-46 loader w/grapple  
(2) IA F12T Title Box Blade - NEW  
IA 160R Grader - NEW  
Verning hyd broom sweeper  
IA F12Tilt box blade, 12' - NEW  
Lowe XR21 Trencher w/cleaner & hoses - NEW  
Wolverine Digger/Backhoe - NEW  
Lowe 750 Auger Unit Only - NEW  
2018 Advance SW900 floor sweeper  
Stout walk through pallet forks 48" - NEW  
Stout Brush Grapple 66-9 - NEW  
Stout 84-FB DCE grapple bucket, QA - NEW  
Stout brush grapple 66-9 - NEW  
Stout 78-FB DCE grapple bucket  
Verning hydraulic broom sweeper  
2018 Niftyift SP34 lift  
100+ selection of NEW skid steer attachments -  
(2) Vermeer 630B stump grinder, 15" grind wheel, Wisconsin 4 cyl air cooled engine  
Vermeer SO2460A, 36"grind wheel, New Deutsche Diesel 4 cyl., fully restored. \$10,000 engine  
Lawn Mower stump grinder, 8" grind wheel, new gas engine 15hp,

#### CORN & GRAIN HEADS

'22 JD HD35F, draper flex s#HD820121, less than 1000acres  
'10 JD 608C 3 sen HHC  
'18 CIH 4408, 3 sen HHC  
'14 NH 980CF 12/30, headsight  
'14 JD 612C, NC, 3 sen HHC, row sense, oposed knife rolls

CIH 3408, 3 sensor HH  
CIH 1083  
'20 CNH 4408, 3 sen HHC  
'14 JD 612C, knife rolls, 3 sen HHC, row sense  
'15 Gerignhoff 1230RD, end auger, 3 sen HHC, field ready  
'13 Drago 8/30, Headsight 3 Sen  
JD 454A RC  
JD 925 flex  
(2) JD 925 rigid  
(2) JD 644  
JD 843  
Agco 6/36 hugger  
(2) Corn reels 8R  
(2) Corn reels 12R  
(8) May Wes stalk stompers w/bracket  
CIH 2206, 30"  
(2) CIH 1020, 20'  
(2) CIH 1020, 25'  
CIH 1020, 16.5'  
CIH 1020, 15'  
Head Trailers - Large selection of all sizes & brands  
Cimarron 30' head trailer

#### GRAIN HANDLING EQUIPMENT

Westfield 13x91 w/swing hopper  
Farm King 10x62 w/swing hopper - low bushels  
Westfield 8x31 w/elec motor - LIKE NEW  
Feterl 6x50  
Peck 8x52  
Peck 8x42  
Buhler Farm King 13x95 w/swing hopper  
Beck 12x72 w/swing hopper  
Farm King 7x13 w/swing hopper, new flighting  
Mayrath 8x50  
Feterl 8x45  
OMC 42' elevator  
Parker 4000 gravity  
(2) Demco 350 gravity  
Brent 1194, tarp, shedded, like new  
Brent 1394 w/scale bars, tarp, Unverferth 8250  
JD 500  
E-Z 510, like new  
Daycon 325bu gravity  
Demco 350 gravity  
GSI 1216 grain dryer  
Parker 375 gravity  
Unverferth 7250, big 1000 PTO, 30.5x32 rubber - ONE OWNER

#### PLANTING EQUIPMENT

JD 1770, 12/30, NT liquid fert, monitor, corn & bean plates  
Friesen seed tender  
Speed King 2 box seed tender  
CIH 5400, 15' drill, 15" space, pull type caddy  
Tye 15' drill w/caddy  
IHC 6200, 15'  
Pull type oat seeder

#### TILLAGE

CIH RMX340, 28' w/3 bar harrow  
CIH 496 - 18', 21', 25'  
Buffalo 6600, 6/30 FC  
Blu-Jet Pivot Track Closer

Hesston 2140-18' disc-o-vator  
IA Pivot Trac Closer  
Sunflower 5054-55' fc  
CIH 4600, 34' fc  
DMI 5 btm  
Hawkins 8/30 ditcher  
Blu-Jet 5 shank ripper  
CIH 496-18' w/harrow

#### TRUCKS & TRAILERS

'99 Ford F550 Super Duty w/Service Box, air compressor, electric crane  
(2) 2004 Transcraft Trailer 50'x102"  
'78 INT 500 PaStar w/dump, Detroit 13 speed, twin screw w/ lift tag  
'07 Freightliner daycab, Mercedes 550, 10 speed, 11x22.5 Tires NEW  
'19 Wilson PSGN5724 livestock, new brakes, good tires  
'02 Wilson 53x102 livestock  
'23 Wilson DWH-700, 43'x66x96, elec tarp, all alum,  
'23 Wilson DWH-700, 43'x66x96, elec tarp, all alum,  
'23 Wilson DWH-700, 43'x66x96, elec tarp, all alum,  
'75 GMC C6500, 14' box & hoist  
'17 Tipte 42'x66", elec tarp, ag hoppers, air ride  
'00 Freighliner FL80, twin screw w/20' steel box  
'16 INT Navistar 8600 daycab, 511,426 miles, Automatic  
'15 Tipte 50'x96"x72", Black, Thunder 6000 elec tarp, 11R22.5 tires on all alum. wheels, standard hoppers-2 spd gearboxes, one vibrator per hopper, stainless rear, 2 rows of 9 lights-micro  
'57 Chevy step side, runs  
'07 INT 8600 daycab, 8-speed automatic  
'96 Tipte 43x96x66, tandem axle, spring ride, 24.5 tires on all steel wheels, Elec. tarp and traps,  
'97 Hawkeye 38' grain trailer  
'09 Wilson 43'x66"x96", standard hoppers  
'15 Wilson 43' x 66", air ride, ag hoppers, elec opener  
'19 H & H 14'x82" bumper hitch w/ ramp  
'70 Chevrolet CE5 w/Brehmer 16' silage box  
'68 Chevrolet TE5, 20' box cheater tag, 283 motor, 2 hoist  
Stirable truck axle  
Truck axle  
(3) '24 X-Star 990gal fuel trailers - NEW  
'23 X-Star 750gal fuel trailers - NEW  
'14 Arctic Cat 550, electronic fuel inject, tune up this summer

#### JOHN DEERE DEALER COLLECTION

'72 JD 4020 synchro, dual hydraulics, 3pt, 3rd link, all shields in tack, Firestone 18.4x34 rubber new, repainted, new batteries, 2 sets rear weights, 3 frnt weights

'69 JD 4020 synchro, dual hydraulics, 3pt, 3rd link, all shields in tack, Firestone 18.4x34 rubber like new, repainted, new batteries, 1 set rear weights  
'72 JD 4320 Synchro, two hydraulics, 3pt, 3rd link, all shields in tack, BF Goodrich 18.4x38 rubber like new, repainted, new batteries, 4 sets of rear weights  
'72 JD 4020 synchro, dual hydraulics, 3pt, 3rd link, all shields in tack, Firestone 18.4x34 rubber new, repainted, new batteries  
'69 JD 4020 synchro, dual hydraulics, repainted, new batteries, 2 frnt  
'69 JD 4020 synchro, dual hydraulics, 3pt, 3rd link, all shields in tack, Firestone 16.9x38 rubber like new, repainted, new batteries  
'67 JD 4020 synchro, dual hydraulics, 3pt, 3rd link, all shields in tack, Firestone 18.4x34 rubber like new, repainted, new batteries, \*\*600 hrs on motor overhaul\*\*  
'64 JD 4020 PS, dual hydraulics, 3pt, 3rd link, all shields in tack, Firestone 18.4x34 rubber like new, repainted, new batteries, \*\*Overhauled 1000+/- hrs ago.  
JD 158 loader w/grapple - LIKE NEW



#### BILL FISCHER

'02 Gleaner R62, 2953/2040 hrs., 30.5x32 rubber, lateral Tilt Gleaner Series 3000 6/30  
Gleaner 8200-25' w/Crary air reel, Schumacher sickles  
Wemhoff 25' head trailer  
'02 Agco RT-145, duals, 3 hyd, 2573 hrs., auto steer, 380/80R42 rubber  
Farm King 10" x 62" w/swing hopper, 90 drive  
Peck 8" x 61'  
Feterl 7" x 60'  
Westfield 8" x 31' w/electric 220V motor  
'90 Ford FT900F, 4x4, 8-speed, 20' steel dump box, diesel, 175,077 miles twin screw - VERY NICE  
'91 White/GMC Straight truck w/20' steel box, Cummins, 8-speed, twin screw

CONTINUED ON BACK SIDE



**TAKING CONSIGNMENTS UNTIL AUGUST 25!**

**MUCH MORE TO ARRIVE BY SALE DAY!**

**OWNERS NOTES:** We're offering a great line of quality late and early model equipment. This is a partial listing as we are expecting a lot more machinery by sale time. If you don't see it, give us call. We provide good loading and unloading facilities with trucking available to and from sale including the entire US, Canada and Mexico. Lunch on Grounds: St. Francis Home & School.

**TERMS & CONDITIONS:** All potential buyers must register at the office. All items are sold "as-is" with all faults and defects. Must be paid for in full on sale day with cash, cashier check, or personal or company check, if accompanied with a bank reference letter. NO DRAFTS ACCEPTED. Buyer responsible from time of sale and will not hold MWI responsible for any liability from theft, accidents or fire. Items purchased and not picked up after 60 days will be retagged to buyer and sold. Unknown or first time consignors must furnish MWI a bank reference letter prior to tagging-in merchandise. Items must be free and clear of any encumbrances of any and all types. MWI will not price protect your merchandise in any fashion, regardless. All sales must come through MWI office. Announcements made DAY OF SALE supercede all printed material. MWI nor the Auctioneers will not be responsible for hours or misrepresentation of any kind on all equipment.

**For More Information, Call: MICHAEL WEGENER IMPLEMENT, INC.**

Office: 402-923-1160 • Michael: 402-920-0168 • Nick: (402) 920-0006  
CORNLEA, NEBRASKA

Website: [www.wegenerimplement.com](http://www.wegenerimplement.com) • E-mail: [wegenerimplement@gmail.com](mailto:wegenerimplement@gmail.com)



# Consignment Auction

## MOWERS & HAY EQUIPMENT

Gehl 522 V rake  
 Vermeer Z11 drum roller  
 JD 1517 Batwing Shredder  
 Case 8480 baler  
 (3) 3pt bale carries  
 Land Pride RCM3615 Shredder,  
 15' - VERY CLEAN  
 JD 705 twin rake  
 Rhino 15' batwing

## SPAYERS & FERTILIZERS

2022 CNH 5550 Trident dry machine, 1595 hrs, Salford box w/ 72' booms, 3 compartments, elec tarp, 420x50 tires, Lincoln auto grease, Raven receiver and display, camera  
 Big John 400 gal 3 pt Sprayer  
 Set Ag Chem slim line saddle tanks  
 Schaben 150gal sprayer w/gas motor  
 Schaben 1000gal nurse tank w/pump, gas  
 750gal tank w/mt brackets  
 JD 4710 sprayer, 3335 hrs, 90' booms, 800gal., SS plumbing, JD 2600 & brown box, 3334 hrs., 5 Sensor Auto Boom

## LIVESTOCK EQUIPMENT

West Point Spread-All 20' spreader  
 Blair 5x12  
 Knight 3300  
 Buffalo 160  
 New Holland 355 w/scale  
 (2) Gnuse silage wagon  
 (100) NPP 6 Bar 20' Continuous Fence - NEW  
 (30) NPP 5x10' portable corral panels - NEW  
 AK - 6-bar 24' free standing panels  
 AK - 6-bar 24' free standing panels w/12' gate

## MISCELLANEOUS

Manco stalk roller  
 SET 480/80R50 duals, excellent rubber  
 GM 8.1 Irrigation Engine, NG, radiator & clutch  
 GM 8.1 Irrigation Engine, NG, radiator  
 (3) 40' High Cube Multi-Door Container - SINGLE USE



**PRE-APPROVED FINANCING  
 or LEASING  
 CALL LORI AT 402-923-1160**

**LOAD OUT:  
 M-F • 8 a.m. to 5:30 p.m.  
 Sat. • 8 a.m. to 12 Noon**



# Michael Wegener Implement, Inc. Consignment Auction

Thursday, August 28, 2025 • 9:00 a.m. CST

Sale Location: Cornlea, NE – Hwy. 81 & 91 Junction,  
 5 miles West on Hwy. 91, turn South to Cornlea

**Equipmentfacts**  
Powered by TractorHouse.com, MachineryTrader.com, TruckPaper.com & MarketBook.com



## Airports

**Omaha Eppley Airfield**  
 85 miles from Auction  
**Norfolk, NE Airport**  
 23 miles from Auction  
**Columbus, NE Airport**  
 25 miles from Auction

## Motels

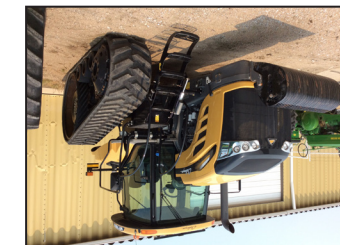
**Comfort Ridge Inn**  
 Madison, NE  
 402-454-2102  
**Midway Motel**  
 Humphrey, NE  
 402-923-0522  
**Ecno Inn**  
 Columbus, NE  
 402-564-9955  
**Super 8**  
 Norfolk, NE  
 402-379-2220



## Something For Everyone

# Consignment Auction Thursday, August 28, 2025

PLEASE POST



ADDRESS SERVICE REQUESTED

Cornlea, NE 68642-5140  
 45860 Elm St.

MICHAEL WEGENER IMPLEMENT, INC.

**TO BE REMOVED FROM  
 MAILING LIST PLEASE CALL  
 402-923-1160**

PRSR STD  
 U.S. POSTAGE  
 PAID  
 COLUMBUS, NE  
 PERMIT NO. 500